



**AXT 710 BT**

Armadio acciaio BT ventilato.  
Bassa temperatura  
Ventilated stainless steel deep freezer  
Negative temperature

- 
- 
- 
- 
- 
- 
- 
- 

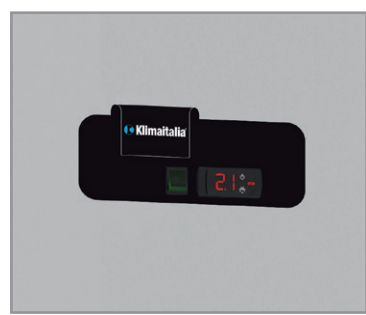


**AXT 1520 BT**

Armadio acciaio BT ventilato.  
Bassa temperatura  
Ventilated stainless steel deep freezer.  
Negative temperature

- 
- 
- 
- 
- 
- 
- 
- 

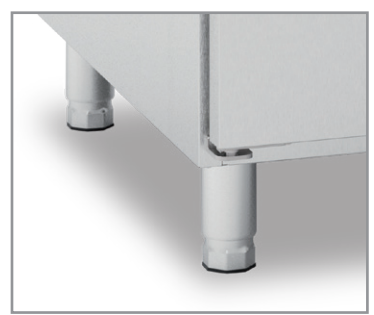
Regolatore di temperatura elettronico  
Electronic controller



Maniglia integrata  
Built-in handle

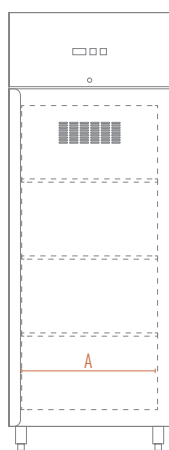
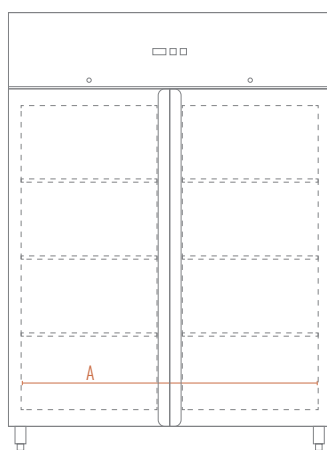


Piedi Gastronorm  
Gastronorm feet

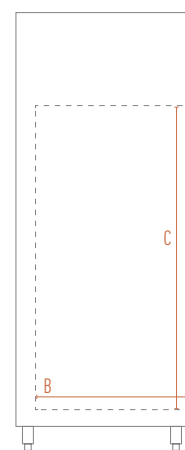


**Caratteristiche / Features**

Modello / Model	AXT 710 BT	AXT 1520 BT
Temperatura / Temperature Range	-22 °C / -18 °C	-22 °C / -18 °C
Classe Climatica / Climate Class	5 (tropicalizzato)	5 (tropicalizzato)
Volume Netto-Lordo / Net-Gross Volume	Lt. 604 / 700	Lt. 1334 / 1400
Superficie Esterna / Body	Acciaio inox Stainless steel	Acciaio inox Stainless steel
Superficie Interna / Inner Liner	Acciaio inox Stainless steel	Acciaio inox Stainless steel
Termometro / Thermometer	Digitale / Digital	Digitale / Digital
Regolatore temperatura / Controller	Elettronico / Electronic	Elettronico / Electronic
Spessore isolamento / Insulation thickness	mm 60	mm 60
Sbrinamento / Defrost	Automatico a gas caldo + Manuale Automatic with hot gas system + Manual	Automatico a gas caldo + Manuale Automatic with hot gas system + Manual
Raffreddamento / Cooling system	Evaporatore a soffitto Ceiling evaporator	Evaporatore a soffitto Ceiling evaporator
Illuminazione / Lighting	1 Led orizzontale / Horizontal	1 Led orizzontale / Horizontal
Chiusura automatica porta / Self closing door	Si / Yes	Si / Yes
Reversibilità porta / Reversible door	Si / Yes	-
Mensole (LxP) / Shelves (WxD)	N°3 GN 2/1 - mm 530 x 650	N°6 GN 2/1 - mm 530 x 650
Piedi-Ruote / Feet-Rollers	4 Piedi / 4 Feet	4 Piedi / 4 Feet
Peso Netto-Lordo / Net-Gross Weight	Kg 124 / 194	Kg 136 / 221
Voltaggio / Voltage	V 230	V 230
Frequenza / Frequency	Hz 50	Hz 50
Refrigerante / Refrigerant	R290	R290
Consumo Energia / Energy Consumption	KwH/24H 17,98	KwH/24H 34,66

 AXT 710 BT  
FRONTE / FRONT

 AXT 1520 BT  
FRONTE / FRONT


LATO / SIDE


**Dimensioni mm / Dimensions mm**

Modello / Model	AXT 710 BT	AXT 1520 BT
Dimensioni Esterne (LxPxH) / External Dimensions (WxDxH)	700 x 830 x 2050	1400 x 830 x 2050
Dimensioni Imballo (LxPxH) / Packaging Dimensions (WxDxH)	750 x 885 x 2125	1450 x 885 x 2125

**Dimensioni Interne mm / Inner Dimensions mm**

A - Larghezza / Width	580	1280
B - Profondità / Depth	682	682
C - Altezza / Height	1528	1528