

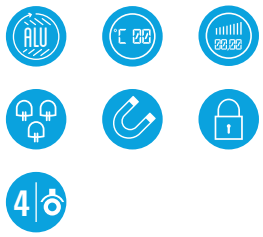


SMART LINK WIFI



CL 801 V2GC SL BLACK/WHITE

Frigo bibite doppia porta scorrevole ventilato
Ventilated sliding double door visicooler



Colori disponibili / Available colors

<input type="radio"/>	Bianco / White
<input type="radio"/>	Nero / Black



CL 1100 V2GC SL BLACK/WHITE

Frigo bibite doppia porta scorrevole ventilato
Ventilated sliding double door visicooler



Colori disponibili / Available colors

<input type="radio"/>	Bianco / White
<input type="radio"/>	Nero / Black



CL 1300 V2GC SL BLACK/WHITE

Frigo bibite doppia porta scorrevole ventilato
Ventilated sliding double door visicooler



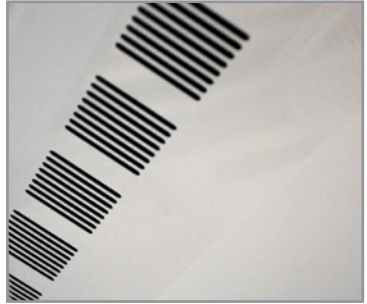
Colori disponibili / Available colors

<input type="radio"/>	Bianco / White
<input type="radio"/>	Nero / Black

Porte scorrevoli con base rinforzata in acciaio inox AISI 304 / Sliding doors with AISI 304 stainless steel reinforced railing



Microventilazione / Microventilation



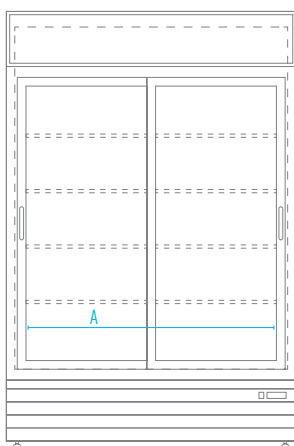
Luci led / Led lighting



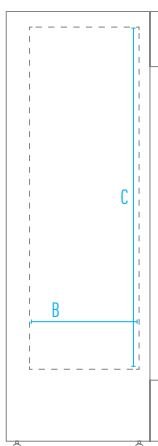
Caratteristiche / Features

Modello / Model	CL 801 V26C SL B/W	CL 1100 V26C SL B/W	CL 1300 V26C SL B/W
Temperatura / Temperature Range	0 °C / +10 °C	0 °C / +10 °C	0 °C / +10 °C
Classe Climatica / Climate Class	4	4	4
Volume Netto-Lordo / Net-Gross Volume	Lt. 534 / 607	Lt. 832 / 888	Lt. 990 / 1057
Superficie Esterna / Body	Acciaio verniciato Painted steel	Acciaio verniciato Painted steel	Acciaio verniciato Painted steel
Superficie Interna / Inner Liner	Alluminio verniciato Painted Aluminium	Alluminio verniciato Painted Aluminium	Alluminio verniciato Painted Aluminium
Termometro / Thermometer	Digitale / Digital	Digitale / Digital	Digitale / Digital
Regolatore temperatura / Controller	Elettronico / Electronic	Elettronico / Electronic	Elettronico / Electronic
Smart Link WiFi Controllo remoto / Remote controller	Optional	Optional	Optional
Spessore isolamento / Insulation thickness	mm 50	mm 50	mm 50
Sbrinamento / Defrost	Automatico a fermo compressore Automatic compressor cycle	Automatico a fermo compressore Automatic compressor cycle	Automatico a fermo compressore Automatic compressor cycle
Illuminazione / Lighting	2 Led verticali / Vertical	2 Led verticali / Vertical	2 Led verticali / Vertical
Chiusura automatica porta / Self closing door	Scorrevole / Sliding	Scorrevole / Sliding	Scorrevole / Sliding
Chiave e serratura / Lock and key	Si / Yes	Si / Yes	Si / Yes
Mensole (LxP) / Shelves (WxD)	N° 8 - mm 410 x 365	N° 8 - mm 504 x 460	N° 8 - mm 605 x 410
Piedi-Ruote / Feet-Rollers	4 Ruote / 4 Rollers	4 Ruote / 4 Rollers	4 Ruote / 4 Rollers
Peso Netto-Lordo / Net-Gross Weight	Kg 133 / 140	Kg 155 / 175	Kg 173 / 195
Voltaggio / Voltage	V 220-240	V 220-240	V 220-240
Frequenza / Frequency	Hz 50	Hz 50	Hz 50
Refrigerante / Refrigerant	R290A	R290A	R290A
Assorbimento / Absorption	W 500	W 750	W 750
Consumo Energia / Energy Consumption	KwH/24H 3,5	KwH/24H 5,6	KwH/24H 6,5

FRONTE / FRONT



LATO / SIDE


Capienza / Capacity

Modello / Model	CL 801 V26C SL B/W	CL 1100 V26C SL B/W	CL 1300 V26C SL B/W
Btg lt. 1 / Btl lt. 1	128	200	240
Btg cl. 75 / Btl cl. 75	160	280	280
Btg cl. 66 / Btl cl. 66	216	360	470
Btg cl. 50 / Btl cl. 50	360	564	774
Btg cl. 33 / Btl cl. 33	432	660	756
Latt. cl. 33 / Can cl. 33	684	1120	1400

Dati indicativi e variabili a seconda dei diversi packaging
Variable data depending on the different packaging

Dimensioni mm / Dimensions mm

Modello / Model	CL 801 V26C SL B/W	CL 1100 V26C SL B/W	CL 1300 V26C SL B/W
Dimensioni Esterne (LxPxH) External Dimensions (WxDxH)	940 x 615 x 1983	1130 x 700 x 2023	1330 x 700 x 2023
Dimensioni Imballo (LxPxH) Packaging Dimensions (WxDxH)	990 x 665 x 2060	1180 x 750 x 2100	1380 x 750 x 2100

Dimensioni Interne mm / Inner Dimensions mm

A - Larghezza / Width	843	1053	1253
B - Profondità / Depth	417	503	503
C - Altezza / Height	1521	1571	1571

Dimensioni Personalizzazione (LxH) mm / Sticker Dimensions (WxH) mm

Lato / Side	558,5 x 1895	643,5 x 1935	643,5 x 1934
Vetro / Glass	348 x 1211 (x2)	443 x 1251 (x2)	543 x 1251 (x2)
Opalina / Canopy	935 x 223	1125 x 223	1325 x 223